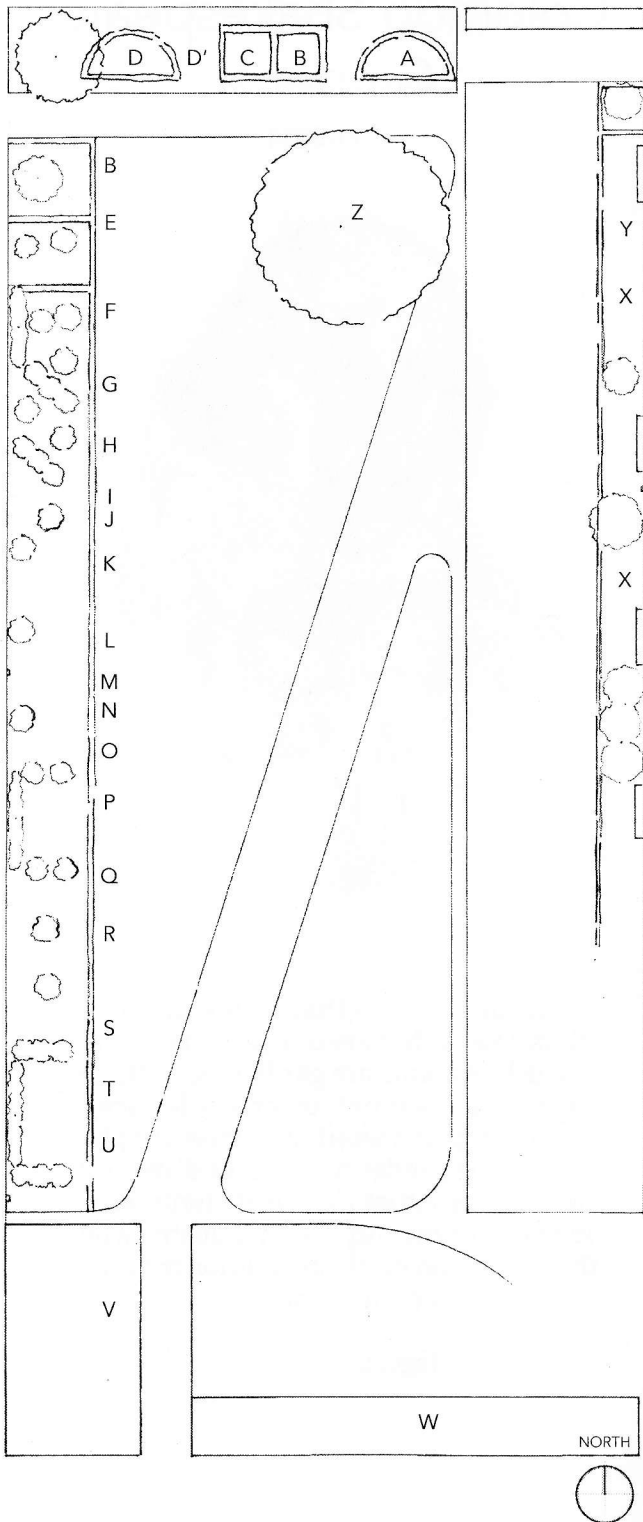


Shakespeare Garden Masterplan

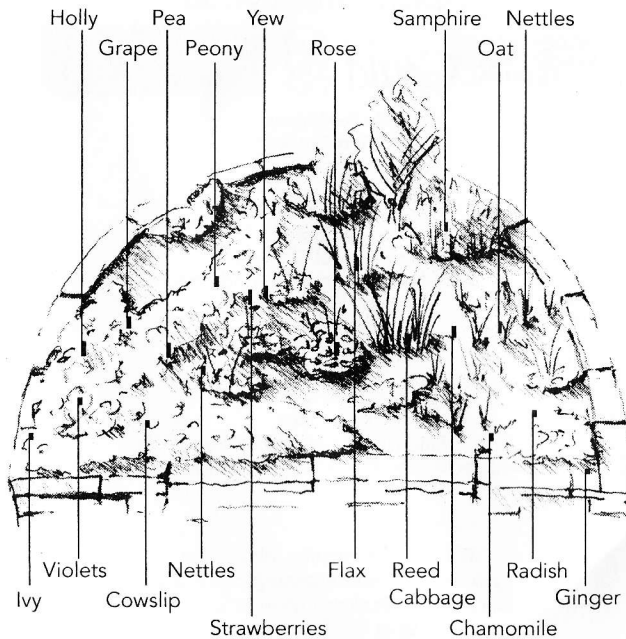


Index

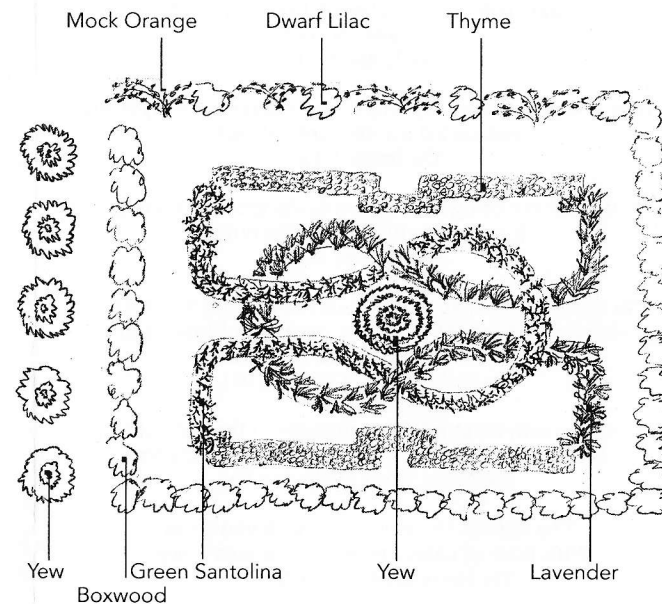
- A Thyme Garden
- B Elizabethan Garden
- C Old Knot Garden (soon to be Cutting Garden)
- D Highlight Garden
- D' Plum Tree (part of the Highlight Garden)
- E Hamlet
- F Taming of the Shrew
- G Twelfth Night
- H Comedy of Errors
- I Love's Labour's Lost
- J Cymbelline
- K Antony and Cleopatra
- L Othello
- M As You Like It
- N Measure for Measure
- O King Lear
- P Romeo and Juliet
- Q All's Well That Ends Well
- R Winter's Tale
- S Much Ado About Nothing
- T The Tempest
- U Macbeth
- V Knot Garden
- W A Midsummer Night's Dream
- X The War of the Roses Garden
- Y The History Plays
- Z Marlene Cowdery Memory Tree

Highlight Garden: Current Year's Plays

The Tempest, Henry IV Parts 1&2,
Merry Wives of Windsor

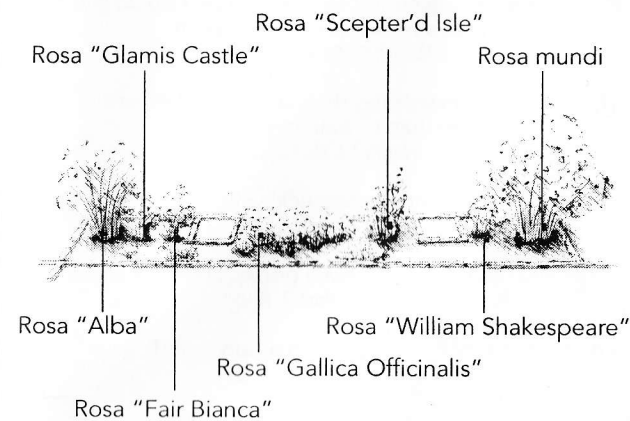


Knot Garden



"It standeth North North-east and by East from the West corner of thy curious knotted garden"
Love's Labours Lost, I. i

War of the Roses Garden



Where the bee sucks there suck I:
In a cowslip's bell I lie.
The Tempest, V.i.

His tears run down his beard, like winter's drops
From eaves of reeds.
The Tempest, V.i.

That now he was the Ivy which had hid my princely trunk
and suck'd my verdure out on't.
The Tempest, I.ii.

I prithee, let me bring thee where Crabs grow; and I with my
long nails will dig thee Pig-nuts.
The Tempest, II.ii.

To shallow rivers, to whose falls / Melodious birds sing
madrigals; / There will we make our beds of roses, / And a
thousand fragrant posies. / To shallow--'
The Merry Wives of Windsor, III.i.

Let the sky rain Potatoes; let it thunder to the tune of Green
Sleeves, hail kissing-comfits, and snow Eringoes.
The Merry Wives of Windsor, V.u.

The several chairs of order look you scour
With juice of balm and every precious flower.
The Merry Wives of Windsor, V.u.

I will dance and eat plums at your wedding.
The Merry Wives of Windsor, V.u.

for though the camomile, the more it is trodden on the faster
it grows, yet youth, the more it is wasted the sooner it wears.
Henry IV, Part 1, II.iv

But I tell you, my lord fool, out of this nettle, danger, we pluck
this flower, safety.
Henry IV, Part 1, II.iii

To put down Richard, that sweet lovely rose,
An plant this thorn, this canker, Bolingbroke?
Henry IV, Part 1, I.iii

If reasons were as plentiful as blackberries, I would give no
man a reason upon compulsion
Henry IV, Part 1, I. II.iv

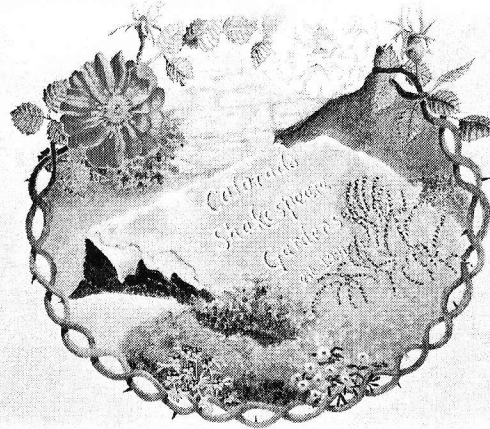
Thou whoreson mandrake, thou art fitter to be worn in my
cap than to wait at my heels.
Henry IV, Part 2, I.ii

Ah, thou honeysuckle villain!
Henry IV, Part 2, II.i

He lives upon mouldy stewed prunes and dried cakes.
Henry IV, Part 2, II.iv

Your colour, I warrant you, is as red as any rose, in good truth!
Henry IV, Part 2, II.iv

And the whores called him mandrake
Henry IV, Part 2, III.ii



The Colorado Shakespeare Gardens were founded in 1991 by
Marlene Cowdery, an avid gardener and Shakespeare buff,
with the intent to educate the public about the many plants
referenced by William Shakespeare in his plays. In addition to
cultivating these gardens, the volunteer-based garden group
provides free garden tours during the summer festival season,
other public presentations, and published research.

We have recently expanded the gardens (see the Masterplan for
the changes). We are actively looking for new members as well as
sponsors to provide donations and support for the garden.

A Special Thanks to Our Sponsors:



In Full Bloom
Tom Brock
Peggy Doyle
Hilary Stojak
Brock Media
Focused Light LLC
University of Colorado
Chet Anderson and Belle Anderson
The Fresh Herb Company
The Tea Spot
Harlequin's Gardens

Acknowledgments:
Joe VanZale
Fritz, Diana, and Mike Kinsey
Boulder County Jail Community Work Program

For more information, please visit
www.coloradoshakespearegardens.org,
or contact us at info@coloradoshakespearegardens.org
or at P.O. Box 20355
Boulder, CO 80305

Colorado Shakespeare Gardens

1991-2014



“'Tis in ourselves that we are thus or
thus. Our bodies are our gardens, to the
which our wills are gardeners: so that
if we will plant nettles, or sow lettuce,
set hyssop and weed up thyme, supply
it with one gender of herbs, or distract it
with many, either to have it sterile with
idleness, or manured with industry, why,
the power and corrigible authority of this
lies in our wills.”

Iago, *Othello*, I. iii